

pennyappeal usa



ORPHANKIND VILLAGE

Feb 2019 Progress Report | The Gambia



PROJECT OVERVIEW & OBJECTIVES

Duration:

3 Years

Start Date:

April 2015

End Date:

October 2018

Beneficiaries:

Direct: 100 orphans, 32 Penny Appeal program staff (including 20 foster mothers)

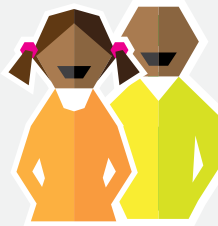
Indirect: 1000 relatives of these orphans, and an estimated 150 inhabitants of the area that will be using the Mosque in the complex for Friday prayers

Making a total of approx 1,282 beneficiaries



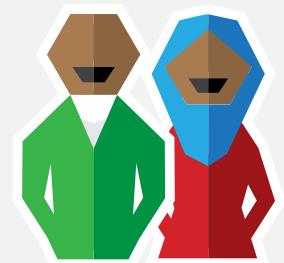
1,282*
Total Benefitted:

Orphan Children



100

Staff Members



32

* Both direct and indirect



ABOUT ORPHANKIND VILLAGE

Location– The Gambia

The project is located at the Yarambaba Estate area on the Senegambia Airport highway in the Kombo North District, West Coast Region of the Gambia.



The Gambia

OrphanKind Complex

Our OrphanKind program is designed to help transform the lives of disadvantaged orphan children, offering them a better future in a secure family setting. Each of the homes in our OrphanKind village houses 10 orphan children and together with a trained foster mother, they form a family. The community is designed to provide for the complete nurturing of each child through education, access to quality healthcare, and the love of a foster mother to tend to their emotional and psychological needs.

\$1.2M

approx. amount
used to build the
complex



OrphanKind House



School (Girls and Boys Blocks)

The following is included in the complex:

- ✓ 10 Bungalows
- ✓ 1 Standby borehole for continuous water supply
- ✓ 1 Story office block
- ✓ 1 Mosque with wash room facilities
- ✓ Volleyball/basketball court with mini stadium to sit over 300 people
- ✓ A secured fence built around the perimeter of the complex.
- ✓ Children's playground with swings, spinning wheel etc.



PROJECT UPDATES

WHAT WAS COMPLETED

- ✓ The bungalows and office building provided with electricity and water supply from The National Electricity Company (NAWEC)
- ✓ Bungalows are provided with the required facilities such as beds, kitchens, conducive sitting rooms, dining halls, bathrooms and flush toilets, air conditioners and indoor play materials.
- ✓ Other facilities available to make the complex more habitable for children, foster mothers and staff include a reliable electricity and water supply, outdoor play materials and a basketball court as well as a Mosque where the five daily prayers can be observed.
- ✓ Tents with concrete basements have also been provided where children and the foster mothers can sit during leisure time to chat amongst themselves.
- ✓ Similar to a typical village set up children meet at the playground which is locally called the 'Bantaba' at night and during leisure time play together.

In conclusion, the complex has the all the required facilities conducive to a caring and protective environment for the orphan children and their foster mothers.

