

pennyappeal USA
small change. big difference



ORPHANKIND VILLAGE

July 2018 Progress Report | Pakistan



ABOUT ORPHANKIND VILLAGE

Country Profile- Pakistan

Pakistan suffers a lot from natural disasters such as destructive earthquakes and severe floods. These disasters destroy the homes of thousands of Pakistanis each year and too often lead to deaths and injuries. Just as important, these disasters hamper the countries ability to grow economically.



Pakistan

OrphanKind Complex

Our OrphanKind program is designed to help transform the lives of disadvantaged orphan children, offering them a better future in a secure family setting. Each of the homes in our OrphanKind village houses 10 orphan children and together with a trained foster mother, they form a family. The community is designed to provide for the complete nurturing of each child through education, access to quality healthcare, and the love of a foster mother to tend to their emotional and psychological needs.

\$2M

approx. amount
required to build a
cpmplex



OrphanKind House



School (Girls and Boys Blocks)

The following is included in the complex:

- ✓ 10 Orphan Homes
- ✓ Mosque
- ✓ School
- ✓ 2 Playgrounds
- ✓ 3 Staff Apartments
- ✓ Director's Residence
- ✓ Warehouse
- ✓ Gym
- ✓ Pharmacy
- ✓ Swimming Pool



PROJECT UPDATES



30% OF THE PROJECT IS COMPLETE

- Land has been purchased
- Contractors have been selected
- Excavations for the 10 orphan homes is complete
- Digging of tube wells to provide clean water to the village is complete
- Digging and installing underground water tankers for water and sanitation is complete
- Building of retaining walls to resist the lateral pressure of soil on the structures is 80% complete
- Building of a car ramp and stairway at the village entrance is 80% complete
- Building of the village guard room and reception 80% complete.
- Building of parameter wall is complete

NEXT STEPS

- Finalizing the exterior and interior of the village guard room
- Finalizing the building of the retaining walls
- Placing the foundations for all 10 orphan homes and erecting the structure of these homes





DETAILS

1

Stone Masonry (1ST Step Retaining wall)

Excavation for Stone Masonry in (2nd Level -5) to Retain 1st level $\pm 0-0$ (Retaining wall)	100%	Completed
P.C.C under foundation for Stone Masonry in (2nd Level-5) to Retain 1st level $\pm 0-0$ (Retaining wall)	100%	Completed
Stone Masonry in (2nd Level -5) to Retain 1st level $\pm 0-0$ (Retaining wall)	100%	Completed
P.C.C (1:2:4) Cooping Concrete on Stone Masonry after onecourse in (2nd Level -5) to Retain 1st level	100%	Completed
Stone Masonry (2nd Step Retaining wall)	100%	Completed
Excavation for Stone Masonry in (3rd Level-10) to Retain 2nd level -5 (Retaining wall)	100%	Completed
Stone Masonry in (3rd Level-10) to Retain 2nd level -5 (Retaining wall)	100%	Completed
P.C.C (1:2:4) Cooping Concrete on Stone Masonry after onecourse in (3rd Level-10) to Retain 2nd level	100%	Completed
Excavation for Ramp and Steps in (2nd Level-5) to excess 1st level to 2nd Level.	100%	Completed
P.C.C for Ramp and Steps in (2nd Level -5) to excess 1st level to 2nd Level.	100%	Completed
Brick work (13-1/2 inch thick) for Ramp and Steps in (2nd Level -5) to excess 1st level to 2nd Level.	100%	Completed
P.C.C (1:4:8) & (1:2:4) for Ramp and Steps in (2nd Level -5) to excess 1st level to 2nd Level.	100%	Completed

2

Ramp and Stairs (2nd Step)

Excavation for Ramp and Steps in (3rd Level-10) to excess 2nd level to 3rd Level.	100%	Completed
P.C.C for Ramp and Steps in (3rd Level -10) to excess 2nd level to 3rd Level.	100%	Completed
Brick work (13-1/2 inch thick) for Ramp and Steps in (3rd Level -10) to excess 2nd level to 3rd Level.	100%	Completed
P.C.C (1:4:8) & (1:2:4) for Ramp and Steps in (3rd Level -10) to excess 2nd level to 3rd Level	100%	Completed



DETAILS

3

Pointing

Struck Pointing on Stone Masonry (1:2) cement mortar

50%

In Progress

4

R.C.C Retaining Walls

Excavation for End side R.C.C Retaining wall R.W-2 (11ft height)

100%

Completed

P.C.C (1:4:8) for End side R.C.C Retaining wall R.W-2(11ft height)

100%

Completed

Steel Fixing. In foundation for End side R.C.C Retaining wall R.W-2 (11ft height)

100%

Completed

R.C.C Footing (1:2:4) in foundation for End side R.C.C Retaining wall R.W-2 (11ft height)

100%

Completed

Excavation for End side R.C.C Retaining wall R.W-1 (23ft height)

100%

Completed

P.C.C (1:4:8) in foundation for End side R.C.C Retaining wall R.W-1 (23ft height)

100%

Completed



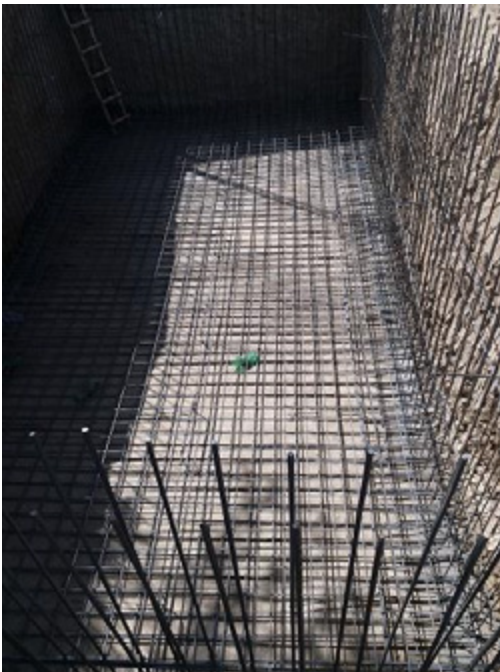


DETAILS

5

Under Ground Water Tanks (02 Nos.)

Excavation for Under Ground Water Tanks (02) Nos.	100%	Completed
Steel Fixing for Under Ground Water Tanks (02) Nos.	100%	Completed
R.C.C in Bed for Under Ground Water Tanks (02) Nos.	100%	Completed
Formwork for Under Ground Water Tanks walls (02) Nos.	100%	Completed
Fixing of Water Stopper for Under Ground Water Tanks walls (02) Nos.	100%	Completed
R.C.C for Under Ground Water Tanks (02) Nos.	100%	Completed
Plaster in Under Ground Water Tanks (02) Nos.	10%	In Progress





DETAILS

6

Guard Room & Reception

Excavation for foundation	100%	Completed
P.C.C (1:4:8) in foundation	100%	Completed
Stone Masonry in (2nd Level -5) to Retain 1st level $\pm 0-0$ (Retaining wall)	100%	Completed
R.C.C (1:2:4) in foundation $\pm 0-0$ (Retaining wall)	100%	Completed
Brick Work in foundation	100%	Completed
R.C.C (1:2:4) in Plinth Beam	100%	Completed
R.C.C (1:1.5:3) in Column	100%	Completed
Brick work in Super Structure	100%	Completed
Lintel Beam Steel Cutting, Banding and Fixing	100%	Completed
R.C.C Lintel Beam Concrete	100%	Completed
R.C.C Slab Steel work and concrete	100%	Completed
Plaster work	20%	In Progress
Back filling in Floor	100%	Completed

